

JZFR23

: V1. 2
: 2019-06



1.

JZFR23

300MHz 450MHz

ASK/OOK

ASK/OOK

2.0V 5.5V

RF IF

2.

➤ 300 - 450 MHz

➤ OOK

➤ 10kbps

➤

-114dBm @ 315MHz

-112dBm @ 433.92MHz

➤ 2.0V-5.5V

➤

4.58mA @ 315MHz /3.3V

5.38mA @ 433.92MHz /3.3V

<0.1uA @ Shut Down Mode /3.3V

➤

➤

➤

➤ ± 350kHz

➤ ESD

➤ -40 ~85

➤ SOP16

3.

➤

➤

RKE

➤

➤

➤

RFID

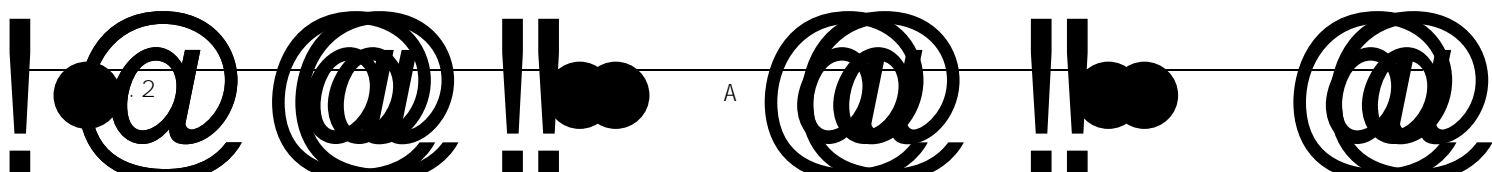


4.

JZFR23 SCP16

1 JZFR23

1	RO1	1	
2	GNDRF		
3	ANT		
4	GNDRF		
5	VDD		
6	SQ		
7	SELO		SEL1
8	SHDN	,	
9	GND		
10	DO		
11	SEL1		SELO
12	OPTI ON0		
13	OPTI ON1		







6.4

	VDD		2.0		5.5	V
	I_{CP}	$f_{RF}=315\text{MHz}$, VDD=3.3V		4.58		mA
		$f_{RF}=315\text{MHz}$, VDD=5V		5.5		mA
		$f_{RF}=433.92\text{MHz}$, VDD=3.3V		5.38		mA
		$f_{RF}=433.92\text{MHz}$, VDD=5V		5.8		mA
	f_{RF}	9.81713MHz		315		MHz
		13.52313MHz		433.92		MHz
	DR				10	Kbps
	I_{STBY}	$V_{SHUT}=VDD$		0.01		uA
		$f_{RF} = 315\text{MHz}$		-114		dBm
		$f_{RF} = 433.92\text{MHz}$		-112		dBm
BW		$f_{RF} = 315\text{MHz}$		350		kHz
		$f_{RF} = 433.92\text{MHz}$		350		kHz
f_{IF}				0.86		MHz
f_{BW}				0.43		MHz
		RSC = 50		-20		dBm
	Spurious Reverse Isolation	ANT pin, RSC = 50		30		$\mu\text{Vr}/\text{mS}$
Z_{REFOSC}	Reference Oscillator Input Impedance			290		k
	Reference Oscillator Source Current			5.2		μA
f_T				13.52313M (9.81713M)		MHz
Z_{CTH}	CTH Source Impedance			145		k
$I_{ZCTH(Leak)}$	CTH Leakage Current	TA = +85° C		± 100		nA
		VDD		6		ns
	SHUT	SHUT		6		ns

